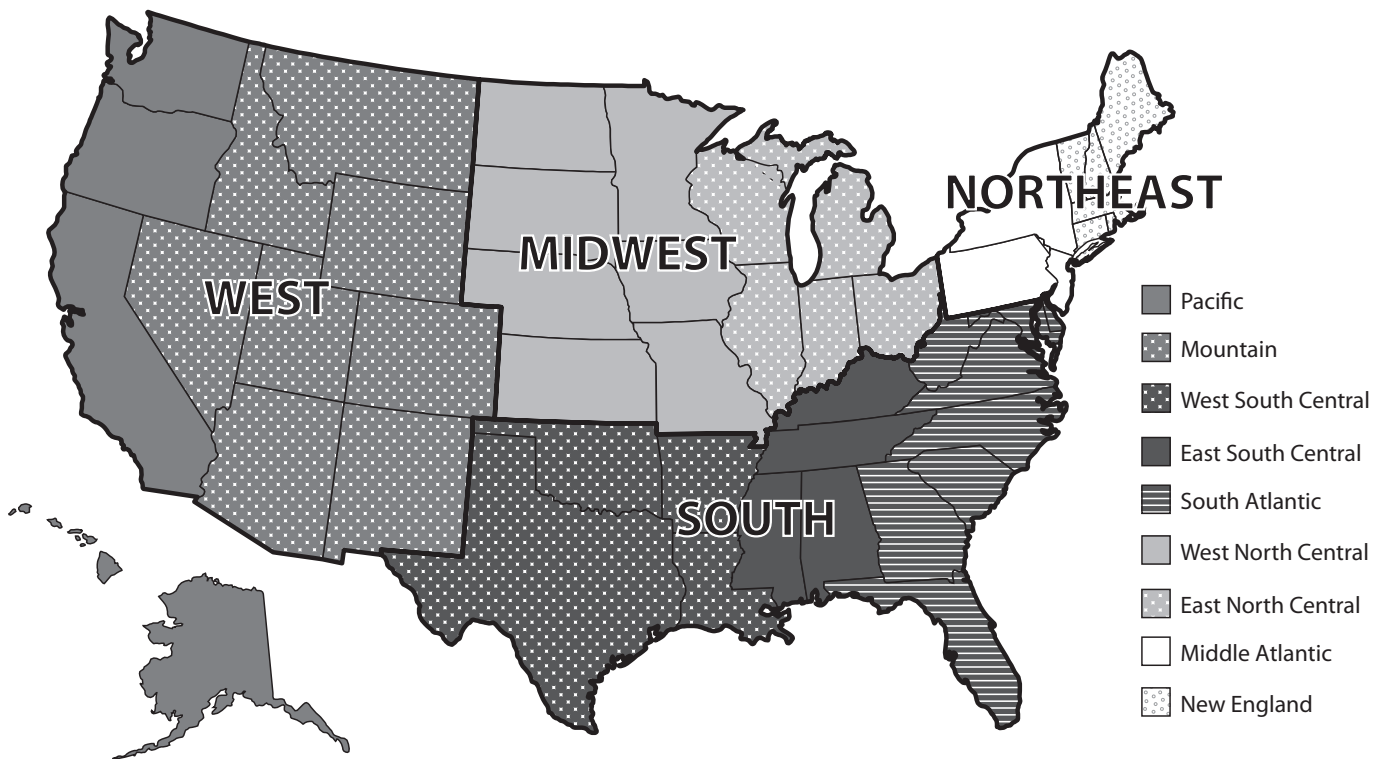


---

Census regions and divisions



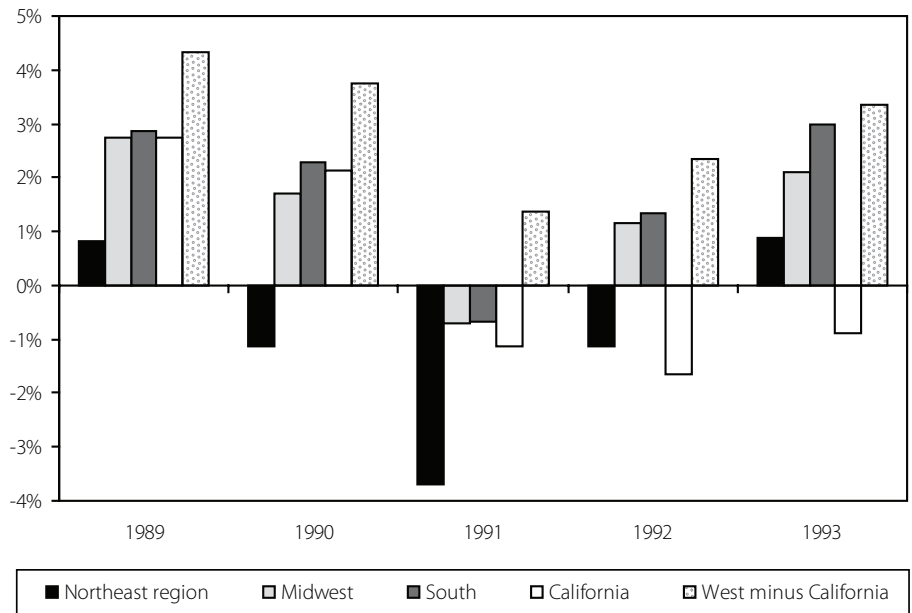
Source: U.S. Census Bureau.

Figure 7A from: Mishel, Lawrence, Jared Bernstein, and Sylvia Allegretto, *The State of Working America 2006/2007*. An Economic Policy Institute Book. Ithaca, N.Y.: ILR Press, an imprint of Cornell University Press, 2007.



---

**Annual regional employment growth, 1989-93**

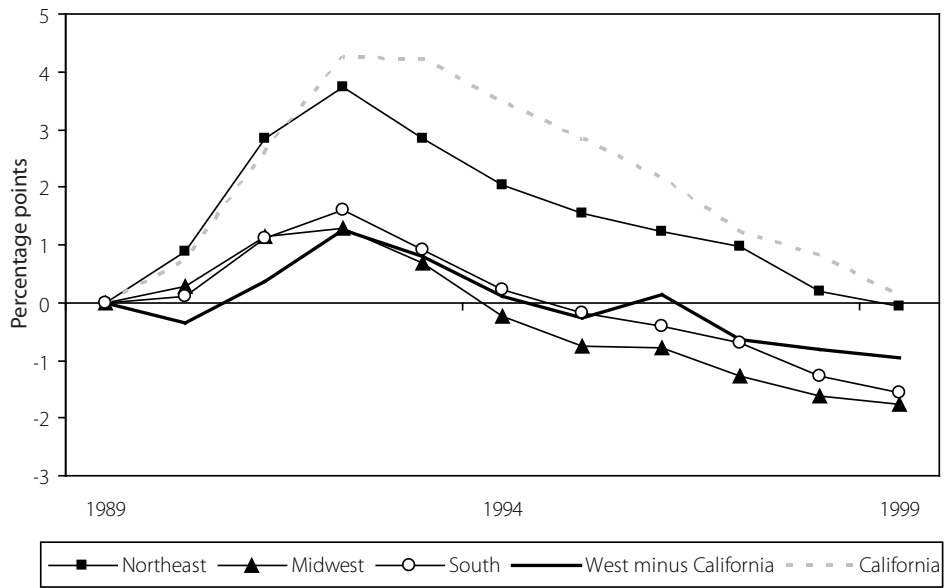


Source: Current Employment Statistics.

Figure 7B from: Mishel, Lawrence, Jared Bernstein, and Sylvia Allegretto, *The State of Working America 2006/2007*. An Economic Policy Institute Book. Ithaca, N.Y.: ILR Press, an imprint of Cornell University Press, 2007.



Unemployment rate by region, 1989-2005



Source: Authors' analysis of Current Population Survey.

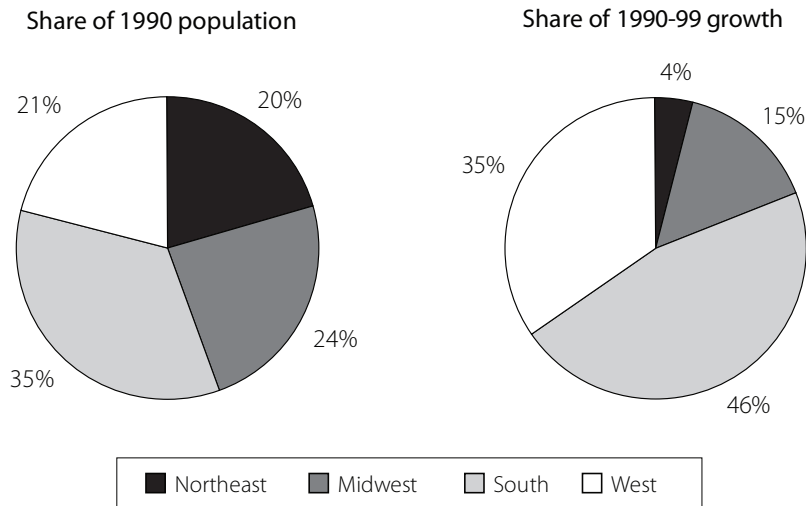
Figure 7C from: Mishel, Lawrence, Jared Bernstein, and Sylvia Allegretto, *The State of Working America 2006/2007*. An Economic Policy Institute Book. Ithaca, N.Y.: ILR Press, an imprint of Cornell University Press, 2007.





---

**Population growth**

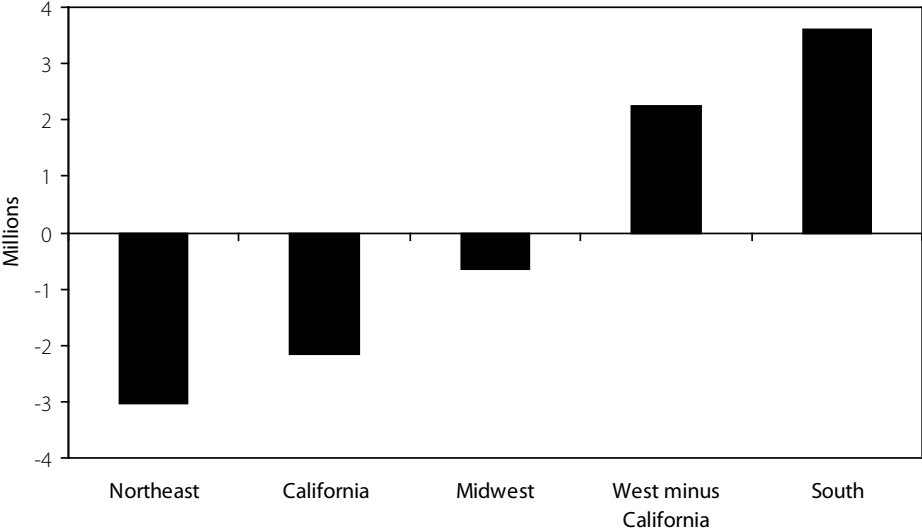


Source: Authors' analysis of U.S. Census Bureau data.

Figure 7E from: Mishel, Lawrence, Jared Bernstein, and Sylvia Allegretto, *The State of Working America 2006/2007*. An Economic Policy Institute Book. Ithaca, N.Y.: ILR Press, an imprint of Cornell University Press, 2007.



**Domestic migration by region, 1990-99**

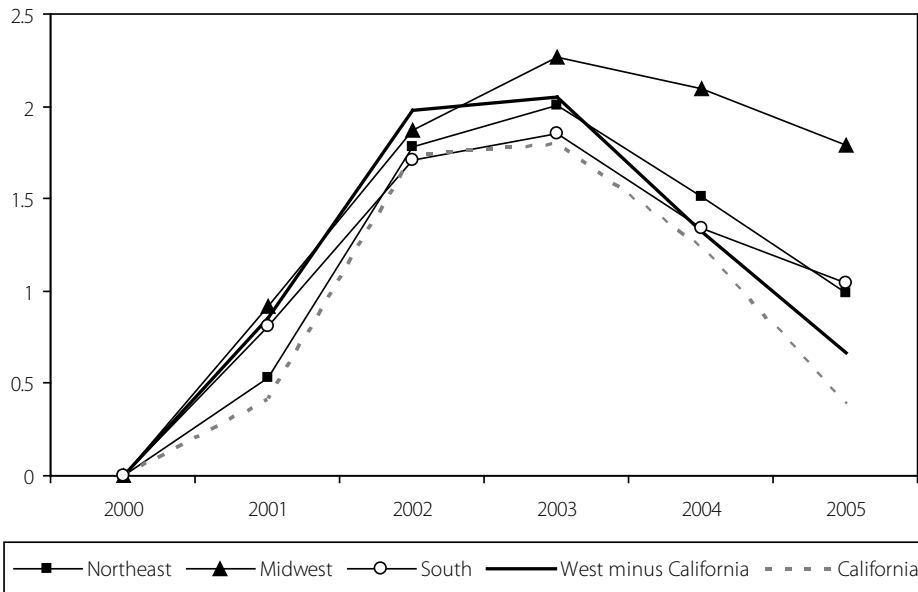


Source: Authors' analysis of U.S. Census Bureau data.

Figure 7F from: Mishel, Lawrence, Jared Bernstein, and Sylvia Allegretto, *The State of Working America 2006/2007*. An Economic Policy Institute Book. Ithaca, N.Y.: ILR Press, an imprint of Cornell University Press, 2007.



Unemployment rate by region, 1989-2005



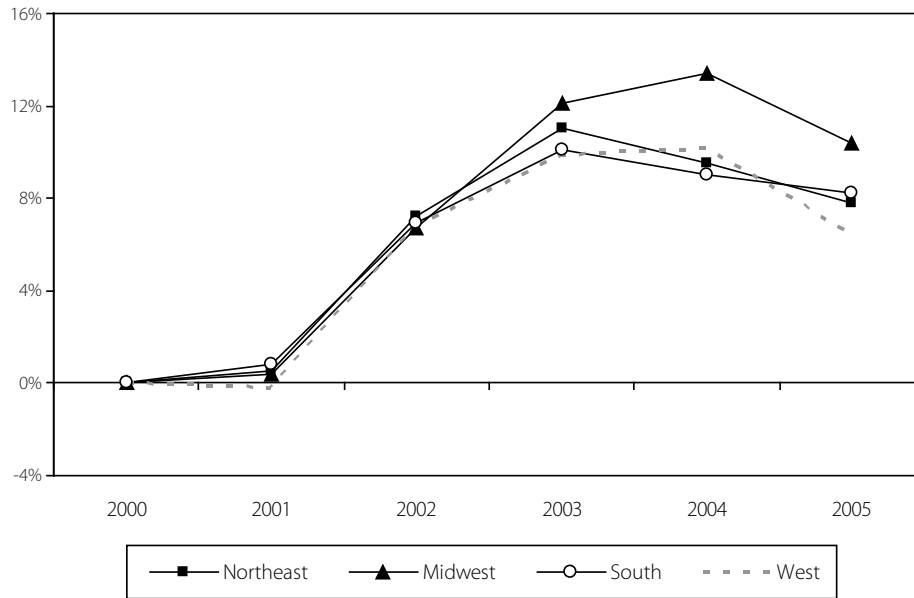
Source: Authors' analysis of Current Population Survey.

Figure 7G from: Mishel, Lawrence, Jared Bernstein, and Sylvia Allegretto, *The State of Working America 2006/2007*. An Economic Policy Institute Book. Ithaca, N.Y.: ILR Press, an imprint of Cornell University Press, 2007.



---

**Long-term unemployment rate by region, 1989-2005**



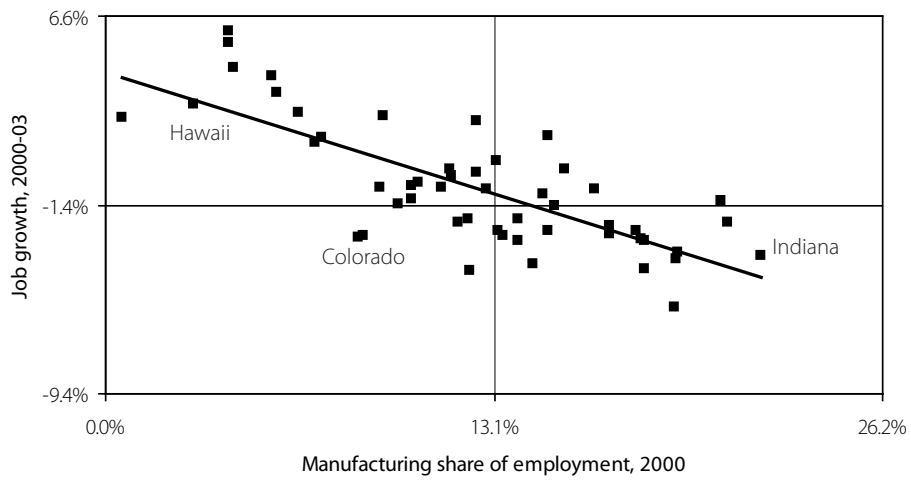
Source: Authors' analysis of Current Population Survey.

Figure 7H from: Mishel, Lawrence, Jared Bernstein, and Sylvia Allegretto, *The State of Working America 2006/2007*. An Economic Policy Institute Book. Ithaca, N.Y.: ILR Press, an imprint of Cornell University Press, 2007.



---

**Job loss by state (2000-03) compared to reliance on manufacturing employment in 2000**

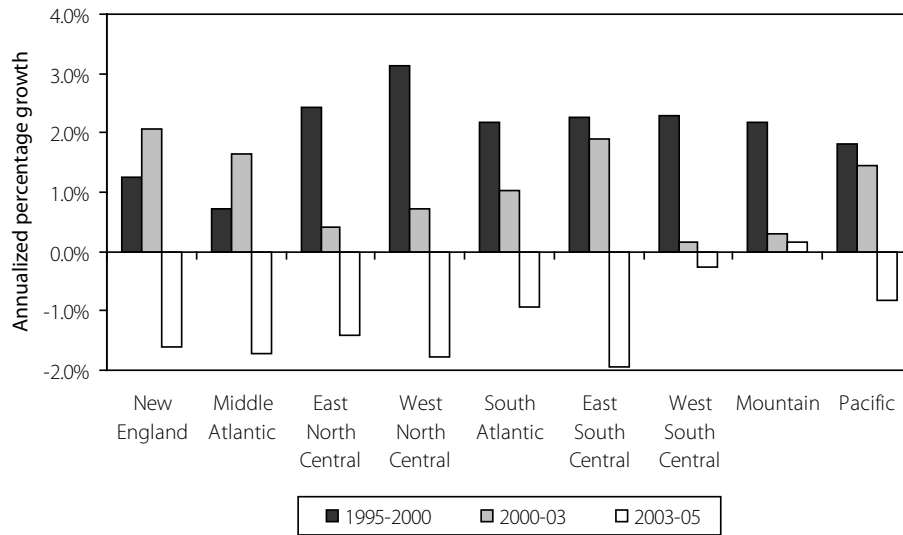


Source: Authors' analysis of Current Population Survey.

Figure 71 from: Mishel, Lawrence, Jared Bernstein, and Sylvia Allegretto, *The State of Working America 2006/2007*. An Economic Policy Institute Book. Ithaca, N.Y.: ILR Press, an imprint of Cornell University Press, 2007.



**Growth in 20th percentile wages by division, 1995-2000, 2000-03, and 2003-05**

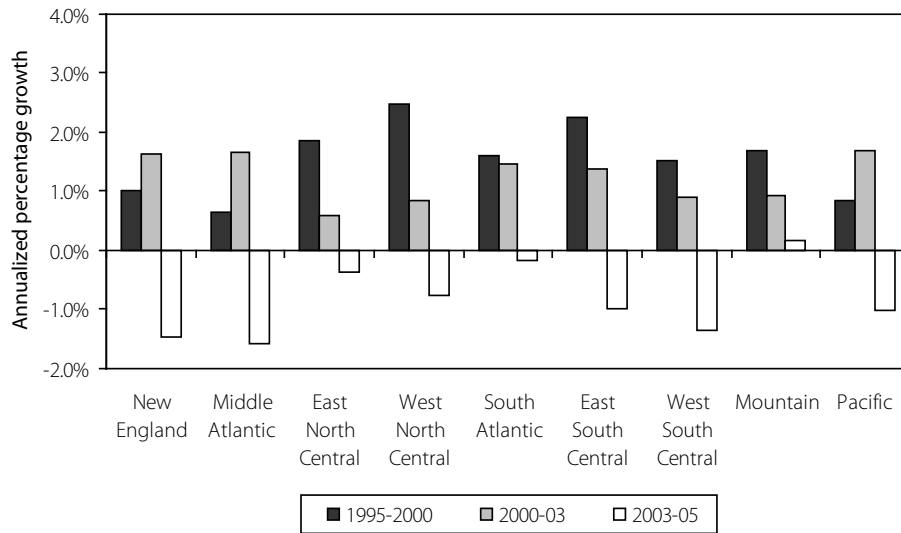


Source: Authors' analysis of CPS-ORG.

Figure 7J from: Mishel, Lawrence, Jared Bernstein, and Sylvia Allegretto, *The State of Working America 2006/2007*. An Economic Policy Institute Book. Ithaca, N.Y.: ILR Press, an imprint of Cornell University Press, 2007.



**Growth in median percentile wages by division, 1995-2000, 2000-03, and 2003-05**

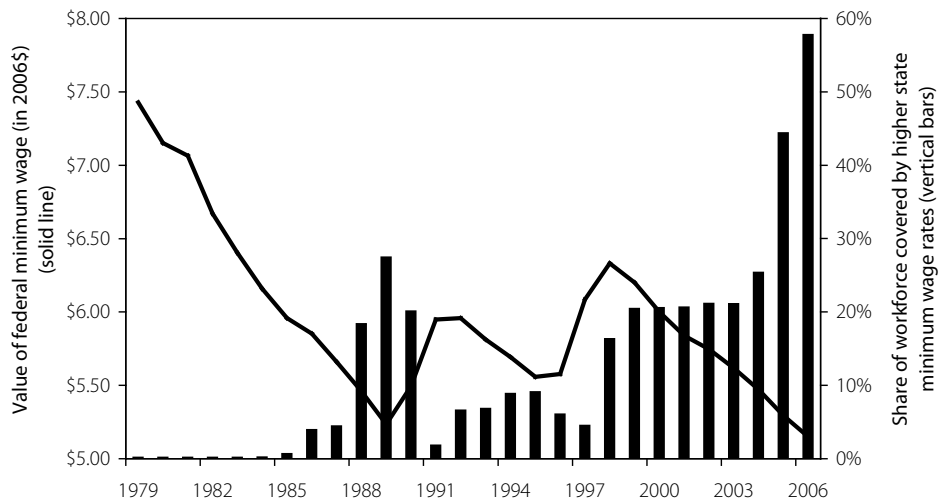


Source: Authors' analysis of CPS-ORG.

Figure 7K from: Mishel, Lawrence, Jared Bernstein, and Sylvia Allegretto, *The State of Working America 2006/2007*. An Economic Policy Institute Book. Ithaca, N.Y.: ILR Press, an imprint of Cornell University Press, 2007.



**Value of federal minimum wage compared to share of workforce covered by higher state minimums**



Source: Authors' analysis of CPS-ORG.

Figure 7L from: Mishel, Lawrence, Jared Bernstein, and Sylvia Allegretto, *The State of Working America 2006/2007*. An Economic Policy Institute Book. Ithaca, N.Y.: ILR Press, an imprint of Cornell University Press, 2007.



---

**State minimum wages greater than the federal minimum wage, 2006**

---

State	2006 state minimum wage	Planned 2007 state minimum wage	Planned 2008 state minimum wage
Alaska	\$7.15	\$7.15	\$7.15
Arkansas	6.25 (effective 10/1/06)	6.25	6.25
California	6.75	7.50	8.00
Connecticut	7.40	7.65	7.65
Delaware	6.15	6.65	7.15
District of Columbia	7.00	7.00	7.00
Florida	6.40*	Inflation-adjusted	Inflation-adjusted
Hawaii	6.75	7.25	7.25
Illinois	6.50	6.50	6.50
Maine	6.75	6.75 (will increase to \$7.00 on 10/1/07)	7.00
Maryland	6.15	6.15	6.15
Massachusetts	6.75	7.50	8.00
Michigan	6.95	6.95 (will increase to \$7.15 on 7/1/07)	7.15 (will increase to \$7.40 on 7/1/08)
Minnesota	6.15	6.15	6.15
New Jersey	7.15	7.15	7.15
New York	6.75	7.15	7.15
North Carolina	Federal level	6.15	6.15
Oregon	7.50*	Inflation-adjusted	Inflation-adjusted
Pennsylvania	Federal level	6.25 (will increase to \$7.15 on 7/1/07)	7.15
Rhode Island	7.10	7.40	7.40
Vermont	7.25*	Inflation-adjusted	Inflation-adjusted
Washington	7.63*	Inflation-adjusted	Inflation-adjusted
Wisconsin	6.50	6.50	6.50

\*State minimum wage adjusted annually for inflation.

Source: U.S. Department of Labor.

Table 7.1 from: Mishel, Lawrence, Jared Bernstein, and Sylvia Allegretto, *The State of Working America 2006/2007*. An Economic Policy Institute Book. Ithaca, N.Y.: ILR Press, an imprint of Cornell University Press, 2007.

