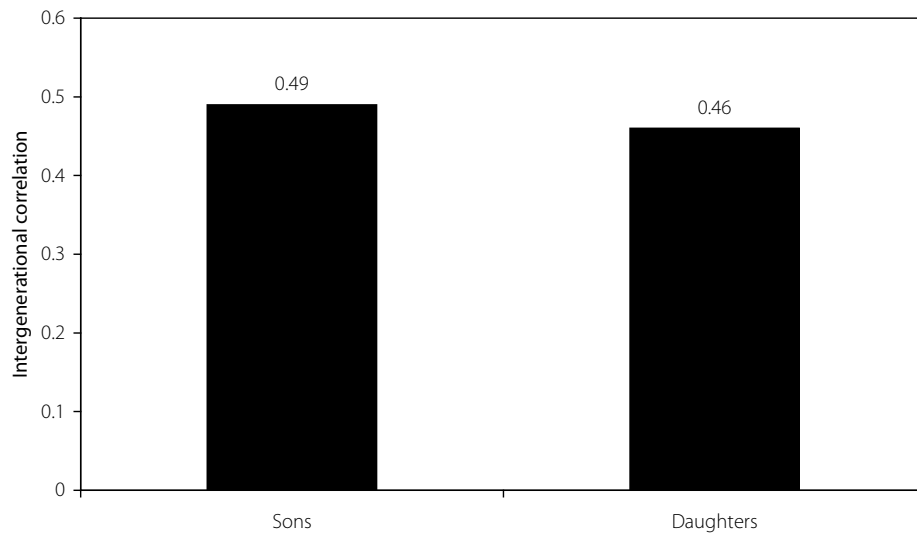

FIGURE 2A Intergenerational income persistence, sons and daughters, 2000

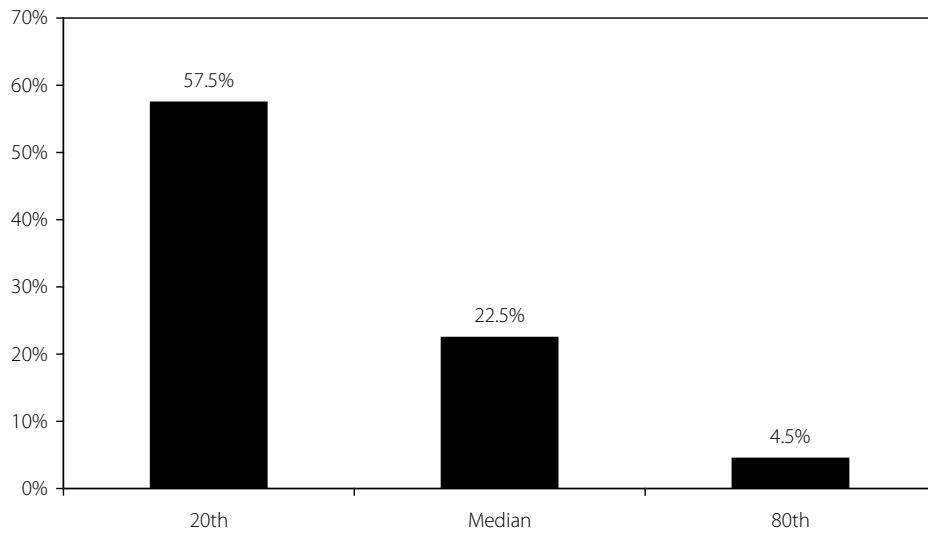


Source: Solon and Lee (2006).

Figure 2A from: Mishel, Lawrence, Jared Bernstein, and Sylvia Allegretto, *The State of Working America 2006/2007*. An Economic Policy Institute Book. Ithaca, N.Y.: ILR Press, an imprint of Cornell University Press, 2007.



FIGURE 2B Likelihood that low-income son ends up above various percentiles

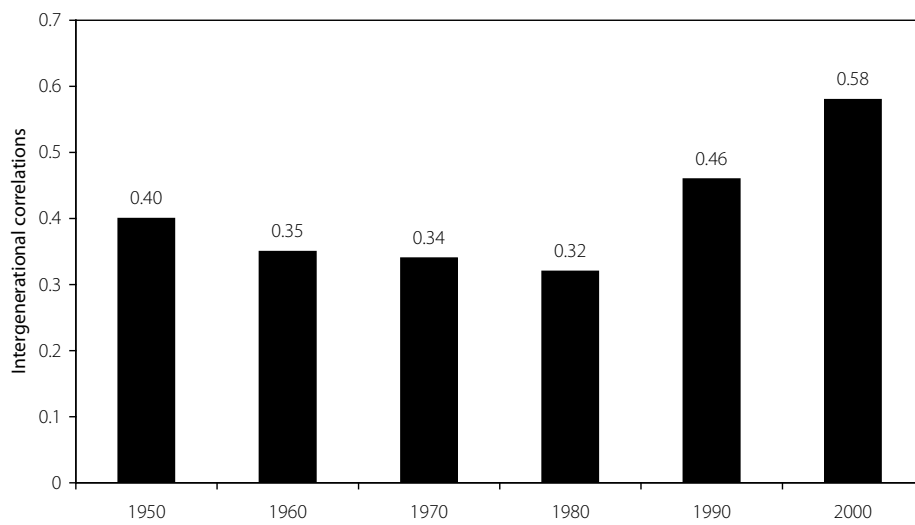


Source: Solon, undated.

Figure 2B from: Mishel, Lawrence, Jared Bernstein, and Sylvia Allegretto, *The State of Working America 2006/2007*. An Economic Policy Institute Book. Ithaca, N.Y.: ILR Press, an imprint of Cornell University Press, 2007.



FIGURE 2C Intergenerational mobility, 1950-2000



Source: Aaronson and Mazumder (2005).

Figure 2C from: Mishel, Lawrence, Jared Bernstein, and Sylvia Allegretto, *The State of Working America 2006/2007*. An Economic Policy Institute Book. Ithaca, N.Y.: ILR Press, an imprint of Cornell University Press, 2007.



Table 2.1 from: Mishel, Lawrence, Jared Bernstein, and Sylvia Allegretto, *The State of Working America 2006/2007*. An Economic Policy Institute Book. Ithaca, N.Y.: ILR Press, an imprint of Cornell University Press, 2007.



TABLE 2.1 Intergeneration wealth transmission, parents to children

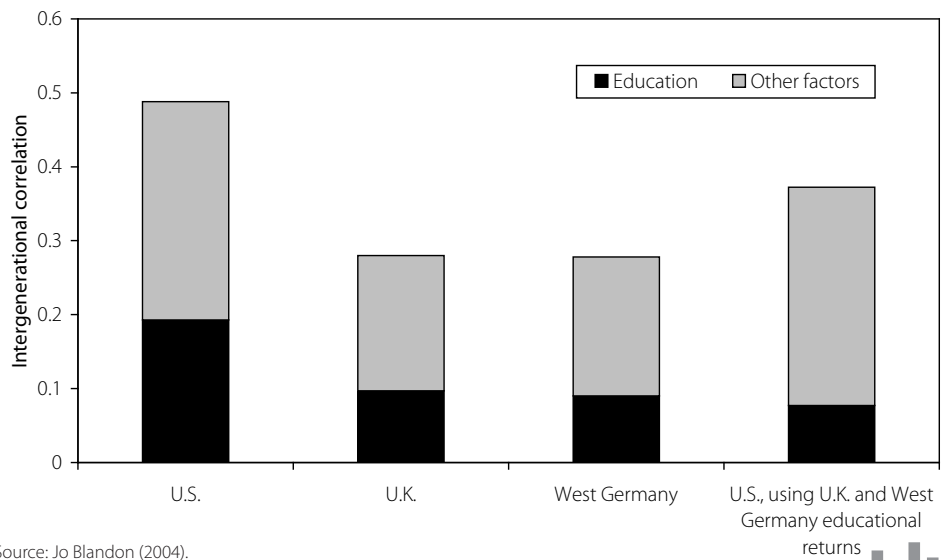
Child's wealth quintile	Parent's wealth quintile				
	Lowest	Second	Middle	Fourth	Top
Lowest	36%	26%	16%	15%	11%
Second	29	24	21	13	16
Middle	16	24	25	20	14
Fourth	12	15	24	26	24
Fifth	7	12	15	26	36
Total	100	100	100	100	100

Source: Charles and Hurst (2003).

Table 2.1 from: Mishel, Lawrence, Jared Bernstein, and Sylvia Allegretto, *The State of Working America 2006/2007*. An Economic Policy Institute Book. Ithaca, N.Y.: ILR Press, an imprint of Cornell University Press, 2007.



FIGURE 2D Intergenerational mobility, role of education

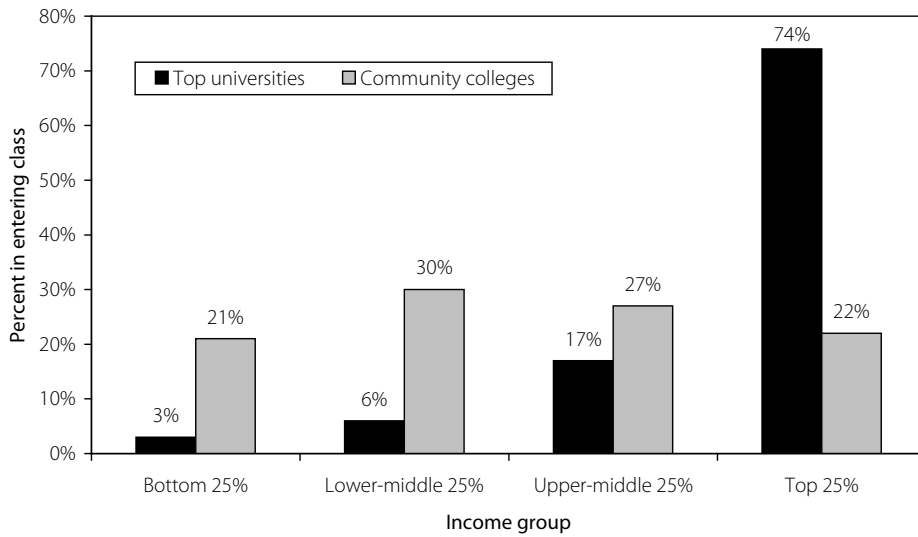


Source: Jo Blandon (2004).

Figure 2D from: Mishel, Lawrence, Jared Bernstein, and Sylvia Allegretto, *The State of Working America 2006/2007*. An Economic Policy Institute Book. Ithaca, N.Y.: ILR Press, an imprint of Cornell University Press, 2007.



FIGURE 2E Income position of the entering class at top colleges and community colleges

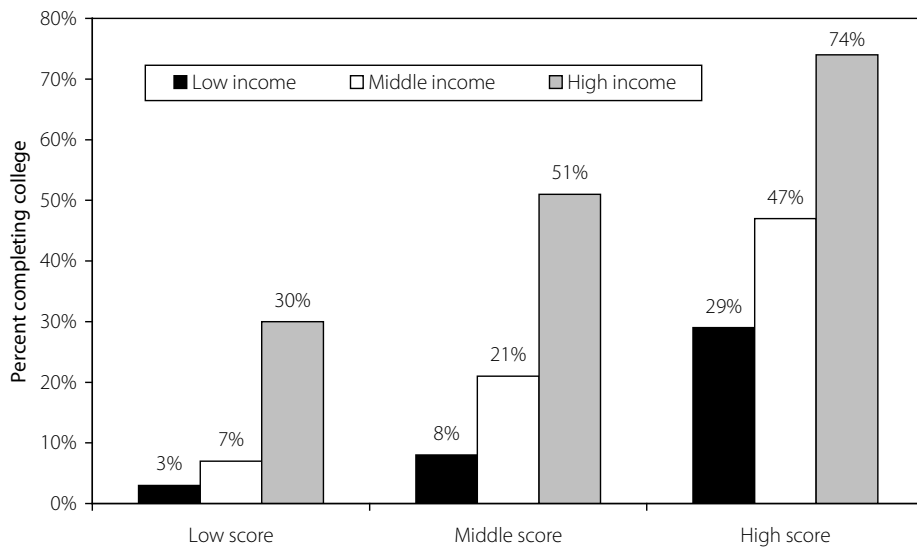


Source: Carnevale and Rose (2004).

Figure 2E from: Mishel, Lawrence, Jared Bernstein, and Sylvia Allegretto, *The State of Working America 2006/2007*. An Economic Policy Institute Book. Ithaca, N.Y.: ILR Press, an imprint of Cornell University Press, 2007.



FIGURE 2F College completion by income status and test scores

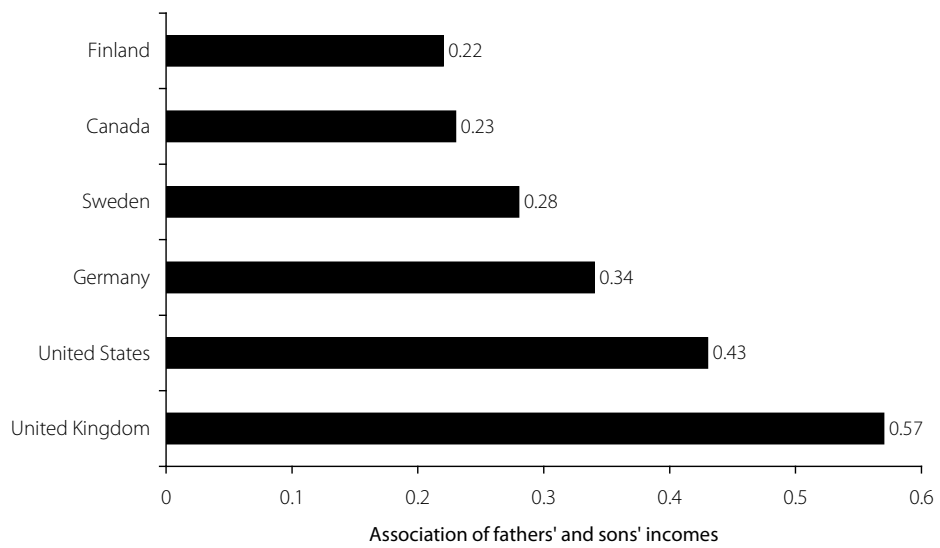


Source: Fox, Connolly, and Snyder (2005).

Figure 2F from: Mishel, Lawrence, Jared Bernstein, and Sylvia Allegretto, *The State of Working America 2006/2007*. An Economic Policy Institute Book. Ithaca, N.Y.: ILR Press, an imprint of Cornell University Press, 2007.



FIGURE 2G Intergenerational earnings mobility in six countries

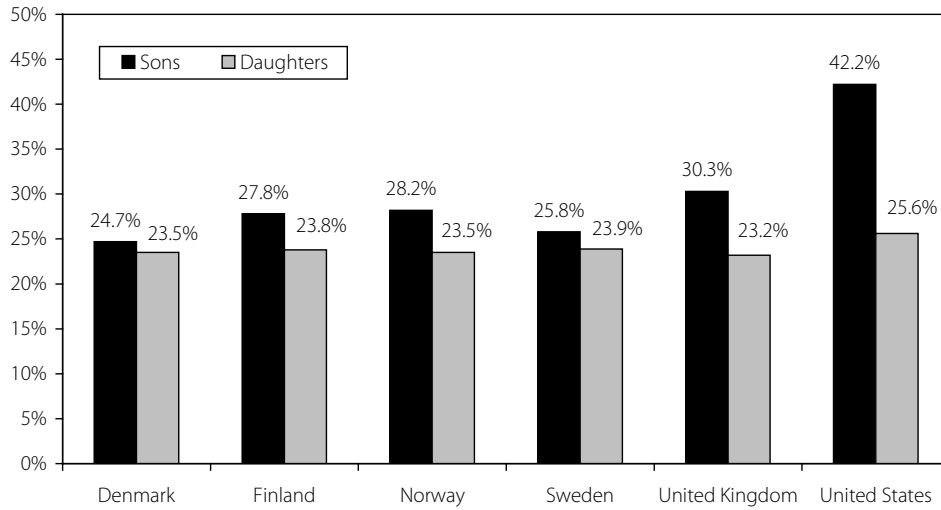


Source: Solon (2002).

Figure 2G from: Mishel, Lawrence, Jared Bernstein, and Sylvia Allegretto, *The State of Working America 2006/2007*. An Economic Policy Institute Book. Ithaca, N.Y.: ILR Press, an imprint of Cornell University Press, 2007.



FIGURE 2H Intergenerational mobility: Percent of sons and daughters in lowest fifth, given fathers in lowest fifth

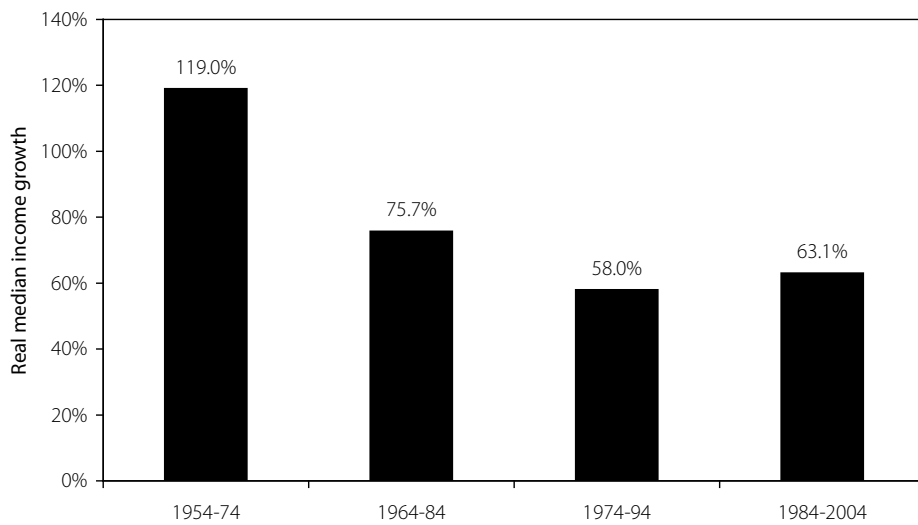


Source: Jantti et al. (2005).

Figure 2H from: Mishel, Lawrence, Jared Bernstein, and Sylvia Allegretto, *The State of Working America 2006/2007*. An Economic Policy Institute Book. Ithaca, N.Y.: ILR Press, an imprint of Cornell University Press, 2007.



FIGURE 2I Real median income growth, cohorts, age 30-50, 1954-2004



Source: Authors' analysis of U.S. Census Bureau data.

Figure 2I from: Mishel, Lawrence, Jared Bernstein, and Sylvia Allegretto, *The State of Working America 2006/2007*. An Economic Policy Institute Book. Ithaca, N.Y.: ILR Press, an imprint of Cornell University Press, 2007.



TABLE 2.2 Share of young adults remaining in poorest fifth by cohort and race

Income fifth at age 24-26	At age 15-17			
	White		African American	
	Born 1952-59	Born 1962-69	Born 1952-59	Born 1962-69
Lowest fifth	22.0%	26.7%	55.4%	61.2%
Second fifth	26.1	27.6	22.1	12.2
Middle fifth	21.1	18.4	8.3	19.6
Fourth fifth	17.5	19.3	10.0	4.7
Top fifth	13.2	8.0	4.2	2.3
Total	100.0	100.0	100.0	100.0

Source: Corcoran and Matsudaira (2006).

Table 2.2 from: Mishel, Lawrence, Jared Bernstein, and Sylvia Allegretto, *The State of Working America 2006/2007*. An Economic Policy Institute Book. Ithaca, N.Y.: ILR Press, an imprint of Cornell University Press, 2007.



TABLE 2.3 Family income mobility over three decades

Quintile in 1969	Quintile in 1979				
	Lowest	Second	Third	Fourth	Top
Lowest	49.4%	24.5%	13.8%	9.1%	3.3%
Second	23.2	27.8	25.2	16.2	7.7
Third	10.2	23.4	24.8	23.0	18.7
Fourth	9.9	15.0	24.1	27.4	23.7
Top	5.0	9.0	13.2	23.7	49.1

Quintile in 1979	Quintile in 1989				
	Lowest	Second	Third	Fourth	Top
Lowest	50.4%	24.1%	15.0%	7.4%	3.2%
Second	21.3	31.5	23.8	15.8	7.6
Third	12.1	23.3	25.0	24.6	15.0
Fourth	6.8	16.1	24.3	27.6	25.3
Top	4.2	5.4	13.4	26.1	50.9

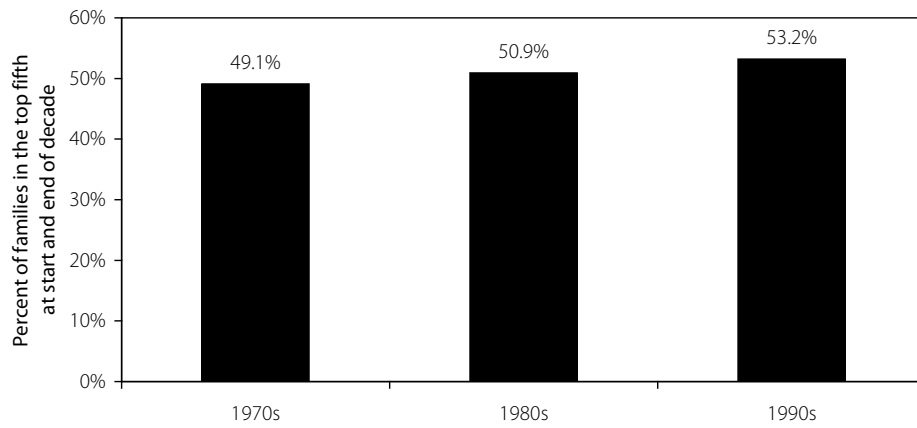
Quintile in 1989	Quintile in 1998				
	Lowest	Second	Third	Fourth	Top
Lowest	53.3%	23.6%	12.4%	6.4%	4.3%
Second	25.7	36.3	22.6	11.0	4.3
Third	10.9	20.7	28.3	27.5	12.6
Fourth	6.5	12.9	23.7	31.1	25.8
Top	3.0	5.7	14.9	23.2	53.2

Source: Bradbury and Katz (2002).

Table 2.3 from: Mishel, Lawrence, Jared Bernstein, and Sylvia Allegretto, *The State of Working America 2006/2007*. An Economic Policy Institute Book. Ithaca, N.Y.: ILR Press, an imprint of Cornell University Press, 2007.



FIGURE 2J The share of families staying in the top fifth, 1969-98



Source: Jantti et al. (2005).

Figure 2J from: Mishel, Lawrence, Jared Bernstein, and Sylvia Allegretto, *The State of Working America 2006/2007*. An Economic Policy Institute Book. Ithaca, N.Y.: ILR Press, an imprint of Cornell University Press, 2007.



TABLE 2.4 Income mobility for white and black families: Percent moving from the bottom 25% to the top 25% and vice versa

	Bottom to top quartile	Top to bottom quartile
All	7.3%	9.2%
White	10.2	9.0
Black	4.2	18.5
Black-white difference	-6.0%	9.5%

Source: Hertz (2003), Table 9.

Table 2.4 from: Mishel, Lawrence, Jared Bernstein, and Sylvia Allegretto, *The State of Working America 2006/2007*. An Economic Policy Institute Book. Ithaca, N.Y.: ILR Press, an imprint of Cornell University Press, 2007.

